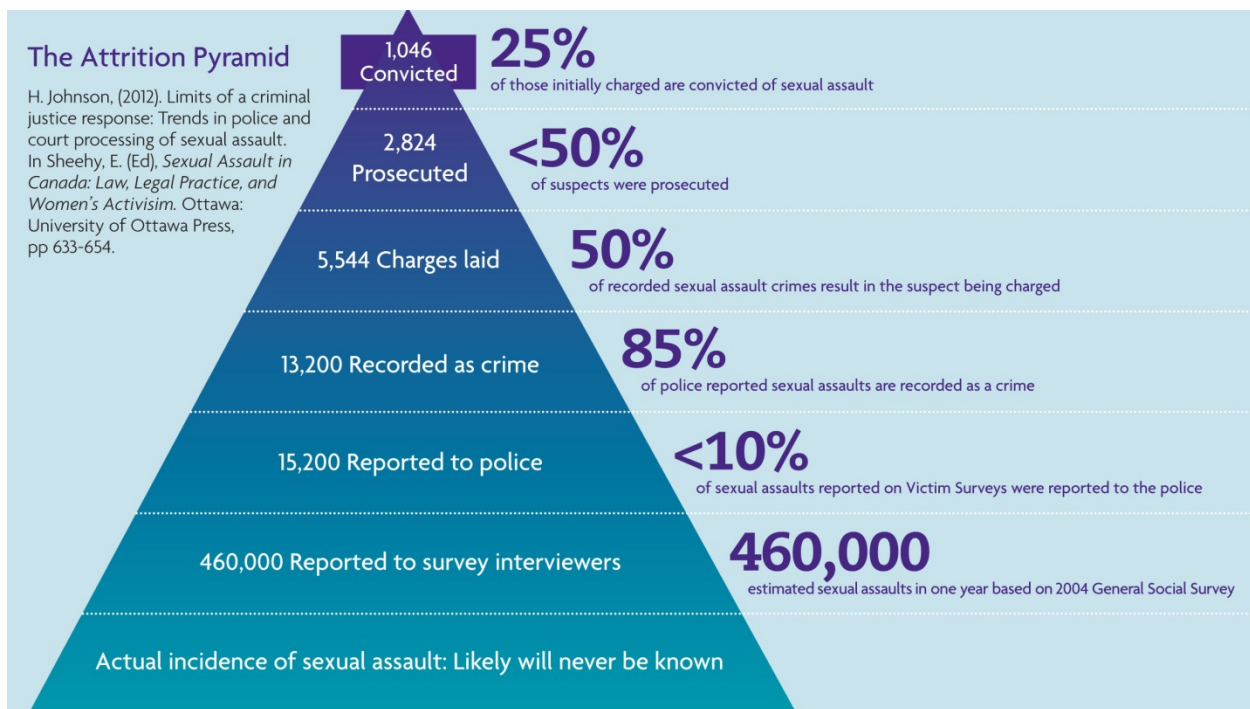


## The Attrition Pyramid

H. Johnson, (2012). Limits of a criminal justice response: Trends in police and court processing of sexual assault. In Sheehy, E. (Ed), *Sexual Assault in Canada: Law, Legal Practice, and Women's Activism*. Ottawa: University of Ottawa Press, pp 633-654.



- 1,046 Convicted - 25% of those initially charged are convicted of sexual assault
- 2,824 Prosecuted - <50% of suspects were prosecuted
- 5,544 Charges laid - 50% of recorded sexual assault crimes result in the suspect being charged
- 13,200 Recorded as crime - 85% of police reported sexual assaults are recorded as a crime
- 15,200 Reported to police - <10% of sexual assaults reported on Victim Surveys were reported to the police
- 460,000 Reported to survey interviewers - 460,000 estimated sexual assaults in one year based on 2004 General Social Survey
- Actual incidence of sexual assault: Likely will never be known

- See more at: <http://www.vawlearningnetwork.ca/issue-1-network-comes-life#sthash.pAb1Lrd0.dpuf>